



## DIGITAL PANEL INDICATOR



V , A , % , mA ,

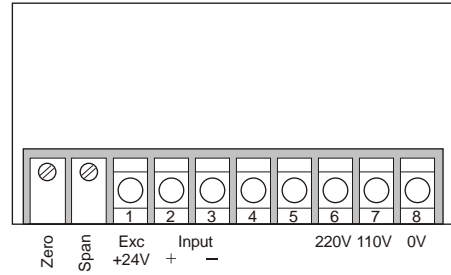
V , A , % , mA ,



# 4 ~ 20mA Digital Display Meter



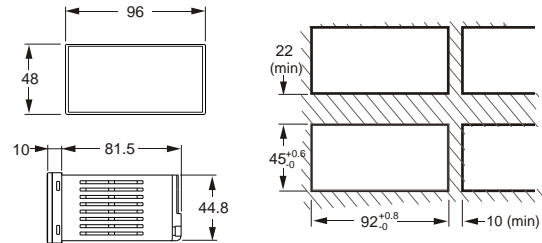
## WIRING DIAGRAM:



## FEATURES:

- Power Supply 110/220V AC.
- Measures 4 ~ 20mA process signals.
- Utilizes 4 digit 7 segment display, display range is -1999 to 1999.
- Utilizes 5 digit 7 segment display, display range is -19999 to 19999.
- Able to shift position of decimal point for better clarity when measuring of signal.
- Able to adjust scaling so as to magnify the signal to a suitable display range.
- Zero and span calibration.
- Provides excitation 24V DC

## DIMENSIONS / PANEL CUTOUT:



## SPECIFICATIONS

<b>Size (mm)</b>	<b>96 (W) X48 (H) X91.5 (D) IP65</b>	
<b>Model: PI</b>	<b>4 digit</b>	<b>5 digit</b>
<b>Power Supply</b>	110/220V AC ± 10%, 50/60Hz	
<b>7-segment Display</b>	0.56" red or green 0.8" red or green	0.56" red or green
<b>Input Signal</b>	4~20mA Direct current	
<b>A/D Converter</b>	3-1/2 digits	4-1/2 digits
<b>Accuracy</b>	± 0.1% F.S. or ± 1 digit	
<b>Sampling Timing</b>	3 times per second	
<b>Operating Environment</b>	0~50°C (20~90% RH)	
<b>Storage Environment</b>	0°C~70°C (20~90% RH)	
<b>Safety Regulation</b>	2KVAC/1min	
<b>Display range</b>	-1999 ~ 1999	"0000" flash
<b>Function</b>	Negative display: " - " Sample value setting: DIP switch Zero calibration: 0 ± 5% F.S Span calibration: 0 ± 10% F.S	

## ORDERING INFORMATION:

PI-1130-□□1□

<b>Power Supply</b>	C---110/220V AC 50/60 Hz
<b>Color of Display</b>	R---0.56" Red    D---0.8" Red G---0.56" Green    E---0.8" Green
<b>Numeric Display</b>	4--- 4 digit 5--- 5 digit

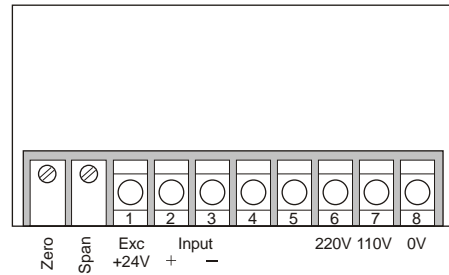
Example: PI-1130-CR14  
 Input signal: DC4~20mA,  
 Power supply: 110V AC or 220V AC (50/60Hz),  
 Red 7-segment display.

★ Please call for customized specifications

# DC Current Indication Meter



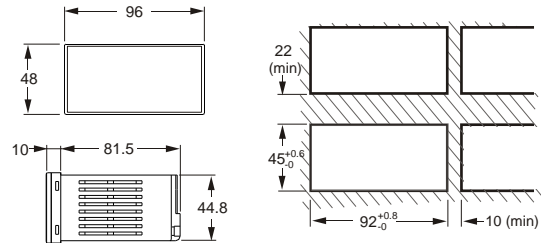
## WIRING DIAGRAM:



## FEATURES:

- Power Supply 110/220V AC.
- Measures direct current signals.
- Utilizes 4 digit 7 segment display, display range is -1999 to 1999.
- Utilizes 5 digit 7 segment display, display range is -19999 to 19999.
- Able to shift position of decimal point for better clarity when measuring of signal.
- Able to adjust scaling so as to magnify the signal to a suitable display range.
- Zero and span calibration.

## DIMENSIONS / PANEL CUTOUT:



## SPECIFICATIONS

<b>Size (mm)</b>	<b>96 (W) x48 (H) x91.5 (D) IP65</b>	
<b>Model: PI</b>	<b>4 digit</b>	<b>5 digit</b>
<b>Power Supply</b>	110/220V AC $\pm 10\%$ , 50/60Hz	
<b>7-segment Display</b>	0.56" red or green 0.8" red or green	0.56" red or green
<b>Input Signal</b>	Direct current	
<b>A/D Converter</b>	3-1/2 digits	4-1/2 digits
<b>Accuracy</b>	$\pm 0.1\%$ F.S. or $\pm 1$ digit	
<b>Sampling Timing</b>	3 times per second	
<b>Operating Environment</b>	0~50°C (20~90% RH)	
<b>Storage Environment</b>	0°C~70°C (20~90% RH)	
<b>Safety Regulation</b>	2KVAC/1min	
<b>Display range</b>	"0000" flash	
<b>Function</b>	Negative display: "—" Sample value setting: DIP switch Zero calibration: $0 \pm 5\%$ F.S Span calibration: $0 \pm 10\%$ F.S	

## ORDERING INFORMATION:

PI - □ □ 3 0 - □ □ 1 □

<b>Input Signal</b>	21--- 0~20uADC	26--- 0~2ADC	▲
	22--- 0~200uADC	27--- 0~5ADC	
	23--- 0~2mA DC	28--- 0~10ADC	
	24--- 0~20mADC		
	25--- 0~200mADC	20--- others	
<b>Power Supply</b>	C---110/220V AC 50/60 Hz		▲
<b>Color of Display</b>	R---0.56" Red	D---0.8" Red	▲
	G---0.56" Green	E---0.8" Green	
<b>Numeric Display</b>	4--- 4 digit		▲
	5--- 5 digit		

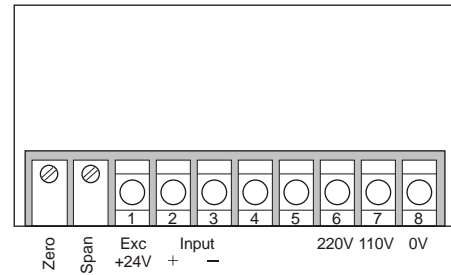
Example: PI-2430-CR14

Input signal: 0~20mADC,  
Power supply: 110V AC or 220V AC (50/60Hz),  
Red 7-segment display.

# DC Voltage Indication Meter



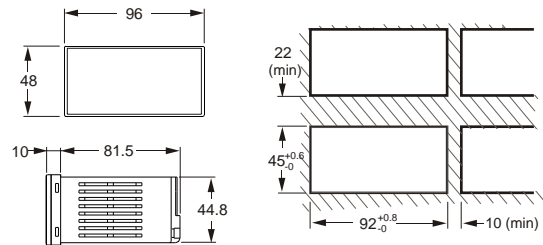
## WIRING DIAGRAM:



## FEATURES:

- Power Supply 110/220V AC.
- Measures direct voltage signals.
- Utilizes 4 digit 7 segment display, display range is -1999 to 1999.
- Utilizes 5 digit 7 segment display, display range is -19999 to 19999.
- Able to shift position of decimal point for better clarity when measuring of signal.
- Able to adjust scaling so as to magnify the signal to a suitable display range.
- Zero and span calibration.

## DIMENSIONS / PANEL CUTOUT:



## SPECIFICATIONS

<b>Size (mm)</b>	<b>96 (W) X48 (H) X91.5 (D) IP65</b>	
<b>Model: PI</b>	<b>4 digit</b>	<b>5 digit</b>
<b>Power Supply</b>	110/220V AC $\pm 10\%$ , 50/60Hz	
<b>7-segment Display</b>	0.56" red or green 0.8" red or green	0.56" red or green
<b>Input Signal</b>	Direct voltage	
<b>A/D Converter</b>	3-1/2 digits	4-1/2 digits
<b>Accuracy</b>	$\pm 0.1\%$ F.S. or $\pm 1$ digit	
<b>Sampling Timing</b>	3 times per second	
<b>Operating Environment</b>	0~50°C (20~90% RH)	
<b>Storage Environment</b>	0°C~70°C (20~90% RH)	
<b>Safety Regulation</b>	2KVAC/1min	
<b>Display range</b>	"0000" flash	
<b>Function</b>	Negative display: " - " Sample value setting: DIP switch Zero calibration: $0 \pm 5\%$ F.S Span calibration: $0 \pm 10\%$ F.S	

## ORDERING INFORMATION:

PI-□□30-□□1□

<b>Input Signal</b>	31--- 0~200mV DC	36--- 0~5V DC			
	32--- 0~20V DC	37--- 0~10V DC			
	33--- 0~200V DC	38--- 0~600V DC			
	34--- 0~50mV DC	39--- 0~1000V DC			
	35--- 0~2V DC	30--- others			
<b>Power Supply</b>	C---110/220VAC 50/60 Hz				
<b>Color of Display</b>	R---0.56" Red G---0.56" Green	D---0.8" Red E---0.8" Green			
<b>Numeric Display</b>	4--- 4 digit 5--- 5 digit				

Example: PI-3230-CR14

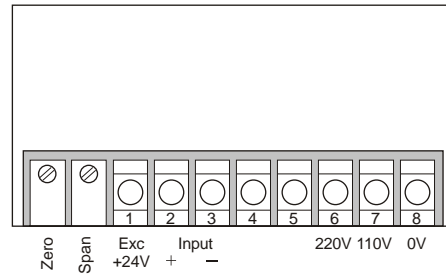
Input signal: 0~20V DC,  
Power supply: 110V AC or 220V AC (50/60Hz),  
Red 7-segment display.

★ Please call for customized specifications

# AC Current Indication Meter



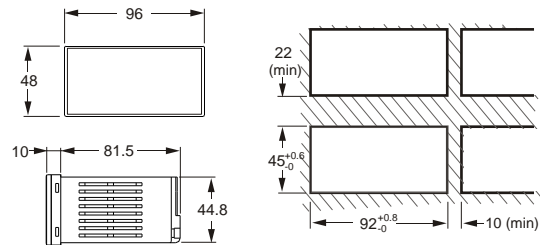
## WIRING DIAGRAM:



## FEATURES:

- Power Supply 110/220V AC.
- Measures alternating signals.
- Utilizes 4 digit 7 segment display, display range is -1999 to 1999.
- Utilizes 5 digit 7 segment display, display range is -19999 to 19999.
- Able to shift position of decimal point for better clarity when measuring of signal.
- Able to adjust scaling so as to magnify the signal to a suitable display range.
- Zero and span calibration.

## DIMENSIONS / PANEL CUTOUT:



## SPECIFICATIONS

<b>Size (mm)</b>	<b>96 (W) x48 (H) x91.5 (D) IP65</b>	
<b>Model: PI</b>	<b>4 digit</b>	<b>5 digit</b>
<b>Power Supply</b>	110/220V AC $\pm 10\%$ , 50/60Hz	
<b>7-segment Display</b>	0.56" red or green 0.8" red or green	0.56" red or green
<b>Input Signal</b>	Alternating current	
<b>A/D Converter</b>	3-1/2 digits	4-1/2 digits
<b>Accuracy</b>	$\pm 1\%$ F.S.	
<b>Sampling Timing</b>	3 times per second	
<b>Operating Environment</b>	0~50°C (20~90% RH)	
<b>Storage Environment</b>	0°C~70°C (20~90% RH)	
<b>Safety Regulation</b>	2KVAC/1min	
<b>Display range</b>	"0000" flash	
<b>Function</b>	Negative display: " - " Sample value setting: DIP switch Zero calibration: $0 \pm 5\%$ F.S Span calibration: $0 \pm 10\%$ F.S	

## ORDERING INFORMATION:

PI - □ □ 3 0 - □ □ 1 □

<b>Input Signal</b>	41--- 0~20uA AC 42--- 0~200uA AC 43--- 0~2mA AC 44--- 0~20mA AC 45--- 0~200mA AC	46--- 0~2A AC 47--- 0~5A AC 48--- 0~10A AC 40--- others	
<b>Power Supply</b>	C--- 110/220V AC 50/60 Hz		
<b>Color of Display</b>	R---0.56" Red G---0.56" Green	D---0.8" Red E---0.8" Green	
<b>Numeric Display</b>	4--- 4 digit 5--- 5 digit		

Example: PI-4130-CR14

Input signal: 0~20uAAC,  
Power supply: 110V AC or 220V AC (50/60Hz),  
Red 7-segment display.

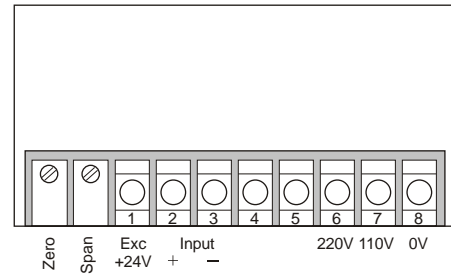
# AC Voltage Indication Meter



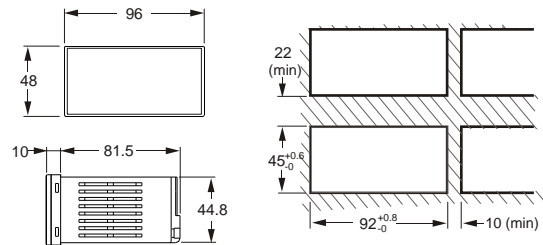
## FEATURES:

- Power Supply 110/220V AC.
- Measures alternating voltage signals.
- Utilizes 4 digit 7 segment display, display range is -1999 to 1999.
- Utilizes 5 digit 7 segment display, display range is -19999 to 19999.
- Able to shift position of decimal point for better clarity when measuring of signal.
- Able to adjust scaling so as to magnify the signal to a suitable display range.
- Zero and span calibration.

## WIRING DIAGRAM:



## DIMENSIONS / PANEL CUTOUT:



## SPECIFICATIONS

<b>Size (mm)</b>	<b>96 (W) X48 (H) X91.5 (D) IP65</b>	
<b>Model: PI</b>	<b>4 digit</b>	<b>5 digit</b>
<b>Power Supply</b>	110/220V AC $\pm 10\%$ , 50/60Hz	
<b>7-segment Display</b>	0.56" red or green 0.8" red or green	0.56" red or green
<b>Input Signal</b>	Alternating voltage	
<b>A/D Converter</b>	3-1/2 digits	4-1/2 digits
<b>Accuracy</b>	$\pm 1\%$ F.S.	
<b>Sampling Timing</b>	3 times per second	
<b>Operating Environment</b>	0~50°C (20~90% RH)	
<b>Storage Environment</b>	0°C~70°C (20~90% RH)	
<b>Safety Regulation</b>	2KVAC/1min	
<b>Display range</b>	"0000" flash	
<b>Function</b>	Negative display: " - " Sample value setting: DIP switch Zero calibration: $0 \pm 5\%$ F.S Span calibration: $0 \pm 10\%$ F.S	

## ORDERING INFORMATION:

PI-□□30-□□1□

<b>Input Signal</b>	51--- 0~200mV AC 52--- 0~20V AC 53--- 0~200V AC 54--- 0~50mV AC 55--- 0~2V AC	56--- 0~5V AC 57--- 0~10V AC 58--- 0~600V AC 59--- 0~1000V AC 50--- others			
<b>Power Supply</b>	C---110/220VAC 50/60 Hz				
<b>Color of Display</b>	R---0.56" Red G---0.56" Green	D---0.8" Red E---0.8" Green			
<b>Numeric Display</b>	4--- 4 digit 5--- 5 digit				

Example: PI-5230-CR14

Input signal: 0~20VAC,  
Power supply: 110V AC or 220V AC (50/60Hz),  
Red 7-segment display.

★ Please call for customized specifications

## Microprocessor Bargraphic Display Scaling Meter

- Dual Channel, dual Bargraph and dual Analog output Capability
- Non-Linear Vessel Volume conversion/software
- Modularized Signal Input Support all process signals and ACV, ACA.....
- Modularized Option Output Support up to 8 Relays, 2 Analog outputs and RS485 interface.
- Inputs and Outputs are isolated
- ModBus Communication Protocol
- Wide Range Power Supply: 85~265Vac or 18~36Vdc
- IP-65 Class Front Panel



CE

## Microprocessor Based PID Temperature Controller

- Multi range input T/C, RTD
- PID or FUZZY control processes
- Wide power supply range: 85~265Vac
- RS-485 communication ModBus protocol
- Pass word protection function



CE

## Standard & Explosion Proof Designed Terminal Box



## Microprocessor Power Quality Meter

- Monitoring RMS Voltage, Current, Frequency, Power Factor
- Monitoring Power Functions: Active Power (Watts), Reactive Power (vars), Apparent Power (VA)
- Monitoring Energy Functions: Active Energy (MWh), Reactive Energy (Mvarh), Apparent Energy (MVAh)
- Monitoring Demand Function: Power Demand
- Power Quality Harmonics: THD Voltage, THD Current Harmonic distortion
- Relay function for over-Voltage, Over-Current
- Voltage Pulse output function for power overload



CE

## Microprocessor Counter

- 6 Counting Mode
- Standard DIN 48 x 48 and 72 x 72 and 96 x 48 housing Memory Retention
- Counting pulse 10 KHz max
- Wide power supply range: 85 ~ 265Vac
- RS-485 communication ModBus protocol
- Sensor supply: 12 VDC 100mA
- 2 Relay output



CE



**FineTek Co., Ltd.**

No.16, Tzuchiang St., Tucheng Industrial Park, Taipei Hsien, Taiwan  
 Tel: 886-2-22696789 Fax: 886-2-22686682  
 e-mail: info@fine-tek.com http://www.fine-tek.com

