

Specification:

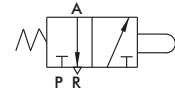
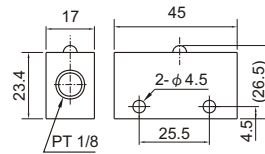
Model	No. of port	Bore size	Medium	Operation pressure range	Ambient temperature	Weight
EPA-100	3	PT 1/8	Air	0~9 kgf/cm ²	-5~+60°C (No freezing)	43 g
EPA-100A	3	PT 1/8	Air	0~9 kgf/cm ²	-5~+60°C (No freezing)	68 g
EPA-101	3	PT 1/8	Air	0~9 kgf/cm ²	-5~+60°C (No freezing)	70 g
EPA-101A	3	PT 1/8	Air	0~9 kgf/cm ²	-5~+60°C (No freezing)	68 g
EPA-102	3	PT 1/8	Air	0~9 kgf/cm ²	-5~+60°C (No freezing)	104 g
EPA-103	3	PT 1/8	Air	0~9 kgf/cm ²	-5~+60°C (No freezing)	67 g
EPA-104	3	PT 1/8	Air	0~9 kgf/cm ²	-5~+60°C (No freezing)	71 g
EPA-105	3	PT 1/8	Air	0~9 kgf/cm ²	-5~+60°C (No freezing)	68 g
EPA-105L	3	PT 1/8	Air	0~9 kgf/cm ²	-5~+60°C (No freezing)	104 g
EPA-106	3	PT 1/8	Air	0~9 kgf/cm ²	-5~+60°C (No freezing)	61 g
EPA-107	3	PT 1/8	Air	0~9 kgf/cm ²	-5~+60°C (No freezing)	54 g
EPA-108*	3	PT 1/8	Air	0~9 kgf/cm ²	-5~+60°C (No freezing)	100 g
EPA-109	3	PT 1/8	Air	0~9 kgf/cm ²	-5~+60°C (No freezing)	108 g

EPA series

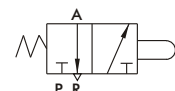
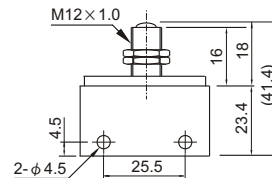
MECHANICAL VALVE



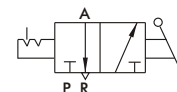
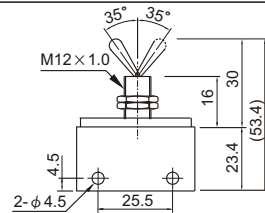
Pin plunger
EPA-100



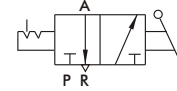
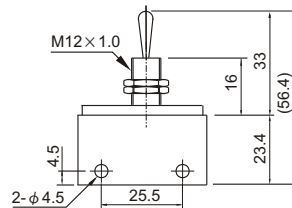
Ball actuator
EPA-100A



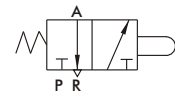
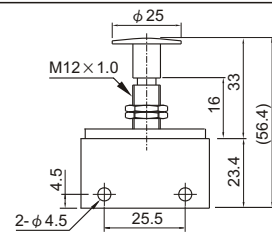
Retained toggle
EPA-101



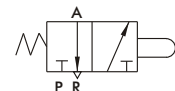
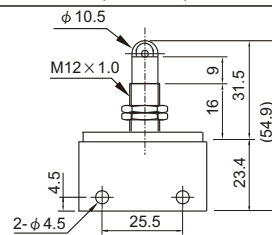
Toggle
EPA-101A



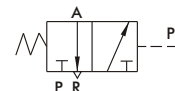
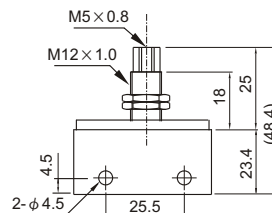
Palm button
EPA-102



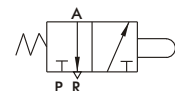
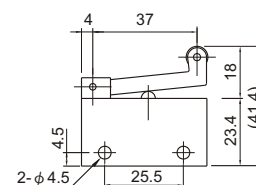
Roller plunger
EPA-103



Pilot
EPA-104



Roller lever
EPA-105



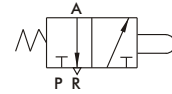
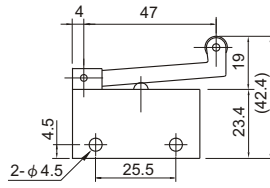
EPA series

MECHANICAL VALVE

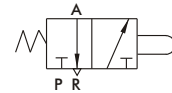
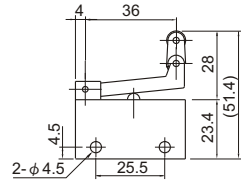


MECHANICAL

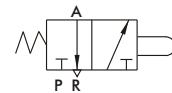
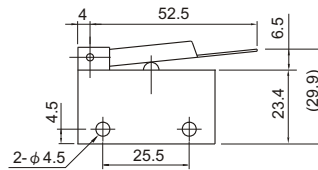
Roller lever
EPA-105L



One way lever
EPA-106

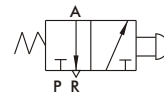
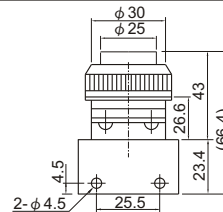


Plain lever
EPA-107



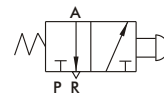
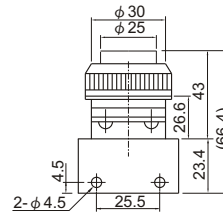
Push button
EPA-108B*

* : B=black

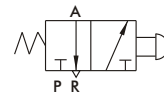
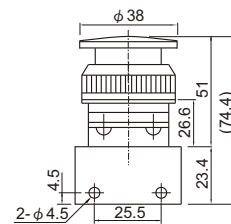


Push button
EPA-108G*

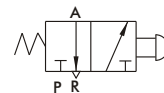
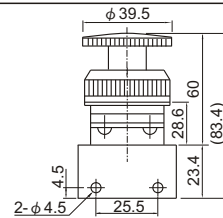
* : G=green



Palm actuator
EPA-108RA



Palm latching actuator
EPA-108RA RESET



Selector
EPA-109

