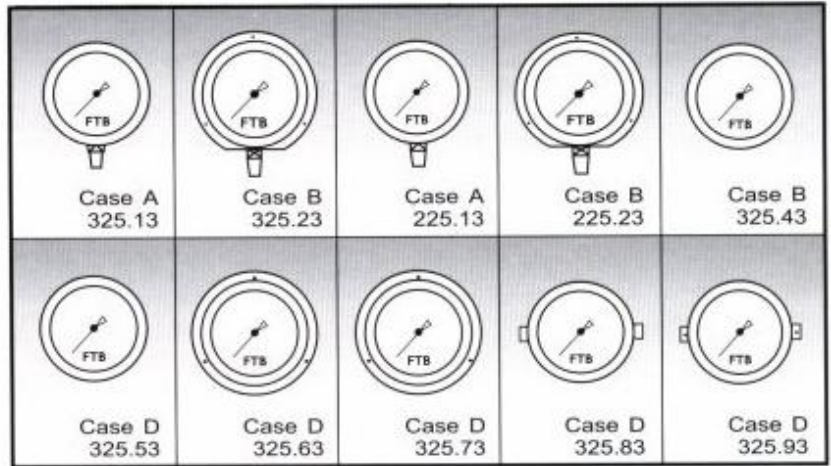
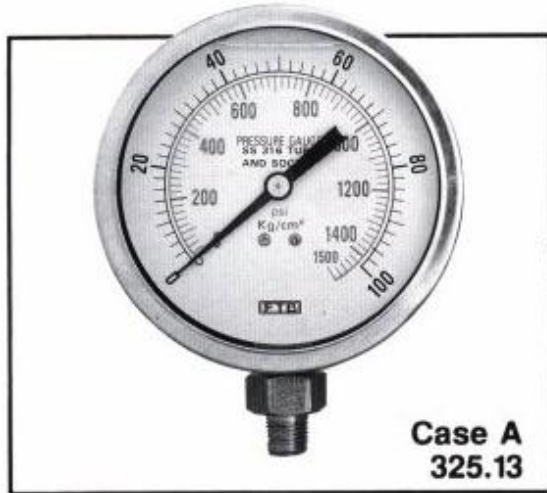




ALL STAINLESS STEEL PRESSURE GAUGES



Model No. : 225 \ 325 SERIES

Outline :

- All series are liquid-filled.
- All series are stainless steel products with water proof, and closed structures which are capable against acidity, alkalinity, and corrosion. It is durable and accurate, good for long time running.
- Special materials of movement and bourdon tube have lasting durabilities.
- Specially it is applicable for corrosive fluid and strong fluctuation.

Features :

Model	: 225 series. (Push Twist Removable Bezel-RB) 325 series. (Crimped on Bezel-CB)
Type	: Pressure gauge \ Vacuum gauge \ Compound gauge.
Nominal Size	: 100mm.
Case	: Stainless steel AISI 304 supplied with LM, CBM or LBM mount type and blowout disk on the top.
Tubing	: Stainless steel AISI 316.
Movement	: Stainless steel AISI 304.
Connection	: Stainless steel AISI 304 \ 316, 1/4" \ 3/8" \ 1/2", NPT \ PT \ PF.
Pointer Type	: General(Selective Adjustable Pointer).
Accuracy	: $\pm 1.5\%$ F.S. (READ ANSI-B40.1 1985)
Scale	: psi, bar, kPa, MPa, Kg/cm ² etc. (Single or Dual Scale)

Note :

- LM : Lower Mount.
- CBM : Center Back Mount.
- LBM : Lower Back Mount.



Specifications :

Nominal size (mm)	Case		Connection	Model No.	Case Accessory
	A	B			
100	A	_____	NPT · PT · PF (1/4" · 3/8" · 1/2")	225.13	_____
		_____		325.13	_____
	B	Back Flange		225.23	_____
		_____		325.23	_____
	D	_____		325.43	_____
		_____		325.53	_____
		Front Flange		325.63	_____
		_____		325.73	_____
		Fixed Strap		325.83	L Clamps
		_____		325.93	U Bracket

Ranges (Kg/cm ²)	Corrosion Proof		Accuracy (%F.S.)	Others
	Socket	Tube		
cmHg	S.S.304 S.S.316	S.S.316	± 1.5	· Case & Ring 304 St. St. · Window Glass Acrylic (ASA LENS) · Liquid Filled Glycerine Silicon
76 ~ 0				
cmHg				
1				
2				
3				
4				
6				
10				
15				
20				
0 ~				
1				
2				
3				
4				
6				
10				
15				
20				
25				
35				
50				
70				
100				
150				
250				
350				
500				
700				
1000				

PRESSURE GAUGES---CASE TYPES

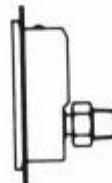
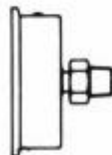
Case A (Lower Mount)



Case B (Lower Mount with Back Flange)



Case D (Back Mount with or without Front Flange)





PRESSURE GAUGES---MOUNTINGS

Lower Mount (LM)

-Direct mounting by means of bottom entry.



Lower Mount (LM) with Back Flange

-Back flange for surface or wall mounting with connection for bottom entry.



Center Back Mount (CBM)/Lower Back Mount (LBM)

-Direct mounting by means of center back/lower back entry.



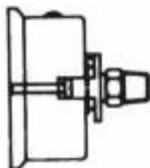
Center Back Mount (CBM)/Lower Back Mount (LBM) with Front Flange

-Front flange with three oval-shaped holes, suitable for panel mounting with connection for either center back or lower back entry.



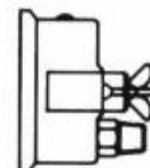
Center Back Mount (CBM) with U Bracket

-Flush panel mounting by means of U Bracket & rear fixing straps with connection for center back entry.



Lower Back Mount (LBM) with L Clamps

-Flush panel mounting by means of L Clamps & rear fixing straps with connection for lower back entry.





MODEL NUMBER FOR FTB PRESSURE GAUGES

BASIC APPLICATION	MATERIAL OF CASE	DIAL SIZE	TYPE OF MOUNTING	MATERIAL OF CONNECTION	TYPE OF CONNECTION	SIZE OF CONNECTION	TYPE OF CONTACT
0 SPECIAL	0 SPECIAL	0 SPECIAL	0 • LM PLASTIC	0 SPECIAL	0 SPECIAL	0 SPECIAL	0 SPECIAL
1 GENERAL	1 STEEL	1 40mm	1 • LM NON-FLANGE	1 BRASS	1 MALE PF	1 1/8"	1 SINGLE CONTACT
2 • RB FILLED ADJUST	2 STAINLESS STEEL	2 50mm	2 • LM BACK FLANGE	2 PHOSPHOR-BRONZE	2 MALE PT	2 1/4"	2 DUAL CONTACTS
3 • CB FILLED	3 ALUMINIUM	3 60mm	3 • CBM PLASTIC	3 STAINLESS STEEL	3 MALE NPT	3 3/8"	3 TRIPLE CONTACTS
4 • RB CLOSED	4 BRASS	4 75mm	4 • LBM NON-FLANGE	4 STEEL	4 FLANGE 0	4 1/2"	4 QUADRUPLE CONTACTS
5 • CB CLOSED	5 STEEL, RING CHROME-PLATED	5 100mm	5 • CBM NON-FLANGE	5 TEFLON	5 FLANGE 1"	5 3/4"	5
6 FILLED CLOSED	6 STEEL, CHROME-PLATED	6 150mm	6 • LBM FRONT FLANGE	6 TITANIUM	6 FLANGE 2"	6 1"	6
7 CONTACT DEVICE	7 PLASTIC	7 200mm	7 • CBM FRONT FLANGE	7 TANTALUM	7 FLANGE 3"	7 0	7
8 DIAPHRAGM	8 PHENOL	8 250mm	8 • LBM CLAMPS	8	8 FLANGE 4"	8	8
9	9	9 300mm	9 • CBM BRACKET	9	9	9	9

• RB : PUSH TWIST REMOVABLE BEZEL
 • CB : CRIMPED ON BEZEL

• LM : LOWER MOUNT
 • CBM : CENTER BACK MOUNT
 • LBM : LOWER BACK MOUNT