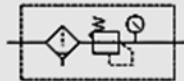


MAFR200 series

AIR UNITS (F.R.UNIT)



Symbol:



Specification:

Model	MAFR200	
Bore No.	6A	8A
Port size	PT 1/8	PT 1/4
Medium	Air	
Operating pressure range	0~9.9 kgf/cm ² (0~0.99 MPa)	
Proof pressure	15 kgf/cm ² (1.5 MPa)	
Effective orifice	7 mm ²	13 mm ²
Regulated pressure range	0.5~8.5 kgf/cm ² (0.05~0.85 MPa)	
Ambient temperature	-5~+60℃ (No freezing)	
Filter element	Standard: 40 μm Option: 5 μm	
Attachment	Pressure gauge (PG-40), bracket	
Weight	257 g, 226 g (MAFR200L)	

Order example:

MAFR200L - 6A - 1K - □ - BSP

MODEL

BORE SIZE
6A: PT 1/8
8A: PT 1/4

Adjustable Press. Range
Blank: Standard Type
1K: 0~1 kgf/cm²
2K: 0~2 kgf/cm²
3K: 0~3 kgf/cm²
4K: 0~4 kgf/cm²

FILTER ELEMENT
Blank: 40 μm
5u: 5 μm

PORT THREAD
Blank: PT thread
BSP: BSP thread
NPT: NPT thread

Blank: standard type
L: Longer case, no case guard

Flow feature:

