

PG series

PRESSURE GAUGE



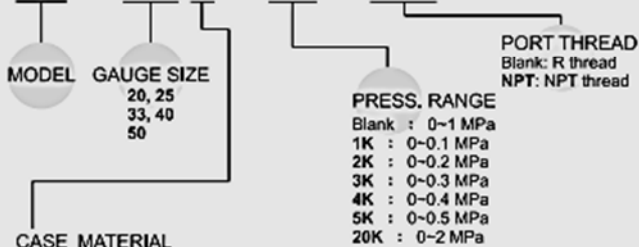
Specification:

Model	PG-20	PG-25	PG-33	PG-40	PG-50
Bore No.	—	—	6A	6A	8A
Port size	—	R 1/16	R 1/8	R 1/8	R 1/4
Medium	Air				
Operating pressure range	0~1 MPa				
Precision	JIS 4.0 Class				
Ambient temperature	-5~+60°C (No freezing)				
Weight	11 g	17 g	34 g	54 g	108 g

※ Please consult us if out of specification

Order example:

PG - 40 S - 1K - NPT



CASE MATERIAL

Code Model	W	S	Note
PG-20	○	○	W(White)
PG-25	○	○	
PG-33	○	○	
PG-40	○	○	W(Electroplating)
PG-50	○	○	

※ Blank: Standard type (Black)
 ※ S: Stainless steel

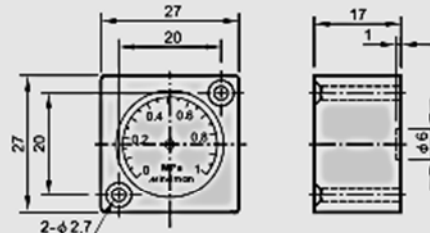
PRESS. RANGE

Blank : 0~1 MPa
 1K : 0~0.1 MPa
 2K : 0~0.2 MPa
 3K : 0~0.3 MPa
 4K : 0~0.4 MPa
 5K : 0~0.5 MPa
 20K : 0~2 MPa

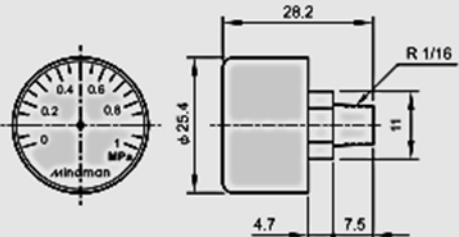
Code Model	Blank	1K	2K	3K	4K	5K	20K
PG-20	○	×	×	×	×	×	×
PG-20W	○	×	×	×	×	×	×
PG-25	○	×	×	×	×	×	×
PG-33S	○	×	○	×	○	×	×
PG-40	○	○	○	○	○	○	○
PG-40W	○	○	○	○	○	○	○
PG-40S	○	×	○	×	○	×	×
PG-50	○	×	×	×	×	○	○

PORT THREAD
 Blank: R thread
 NPT: NPT thread

PG-20

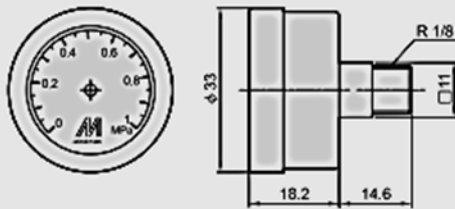


PG-25

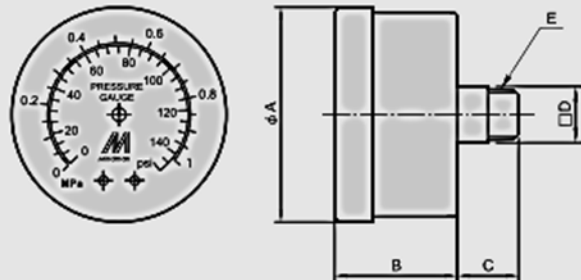


PG-33S

※ Only for SUS case.



PG-40 / 50



Code Tube ID	A	B	C	D	E
PG-40	42	23.5	16.5	11	R 1/8
PG-50	53	26.5	22.5	14	R 1/4