

MAR301 series

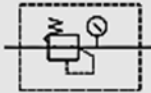
AIR UNITS (R. UNIT)



Mindman



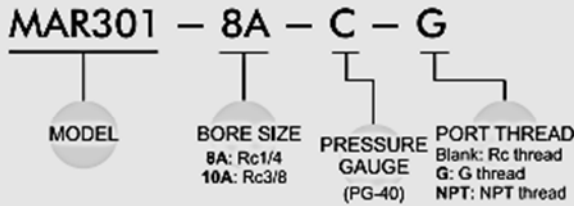
Symbol:



Specification:

Model	MAR301	
Bore No.	8A	10A
Port size	Rc1/4	Rc3/8
Medium	Air	
Operating pressure range	0~1 MPa	
Proof pressure	1.5 MPa	
Effective orifice	32 mm ²	34 mm ²
Regulated pressure range	0,05~0,85 MPa	
Ambient temperature	-5~ +60°C (No freezing)	
Attachment	Bracket	
Option	Pressure gauge (PG-40)	
Weight	250g	

Order example:



Flow feature:

