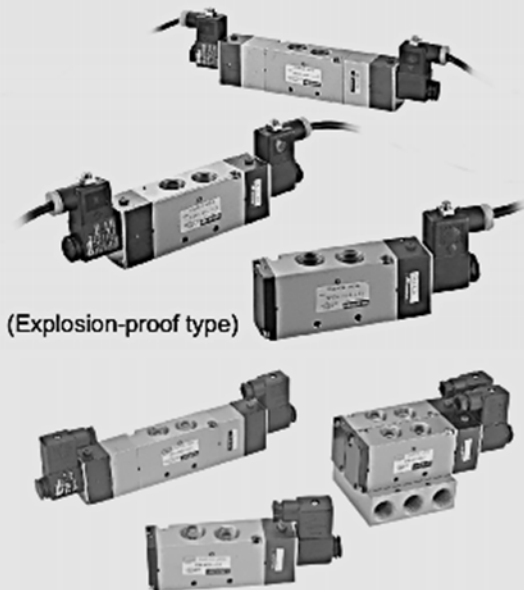


MVSC-460 series

SOLENOID VALVE



(Explosion-proof type)

Specification:

| Model | MVSC-460-3E1 | MVSC-460-4E1,E2 | MVSC-460-4E2C.P.R |
|--------------------------|-------------------------------|-----------------|-------------------------|
| Bore No. | 15A | | |
| Port size | G 1/2 | | |
| No. of port | 3 | 5 | |
| No. of position | 2 | 2 | 3 |
| Medium | Air | | |
| Operating pressure range | 2~7 kgf/cm ² | | 3~7 kgf/cm ² |
| Proof pressure | 10.5 kgf/cm ² | | |
| Effective orifice | 50 mm ² | | 30 mm ² |
| Response time | 50 ms | | |
| Ambient temperature | - 5~ + 50°C (No freezing) | | |
| Voltage | AC110V, 220V (50/60)Hz, DC24V | | |
| Power consumption | AC=6/4.9VA DC=2.5W | | |
| Available voltage range | ±10% | | |
| Insulation class | F class | | |
| Weight | 353 g | 413 g | 498 g 755 g |

Order example of valve:

MVSC - 460 - 4E2C - AC110 - L

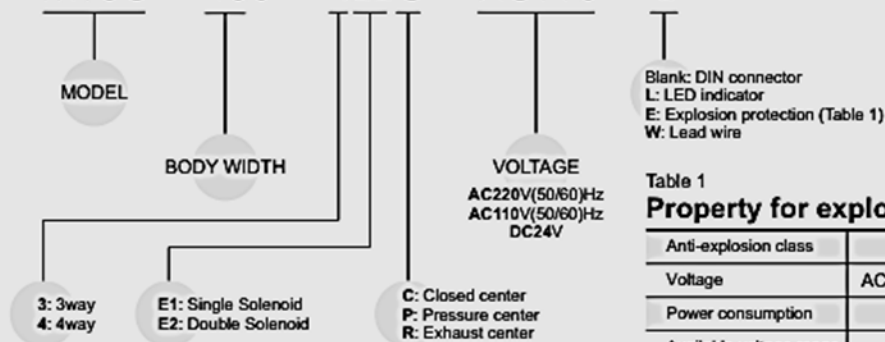


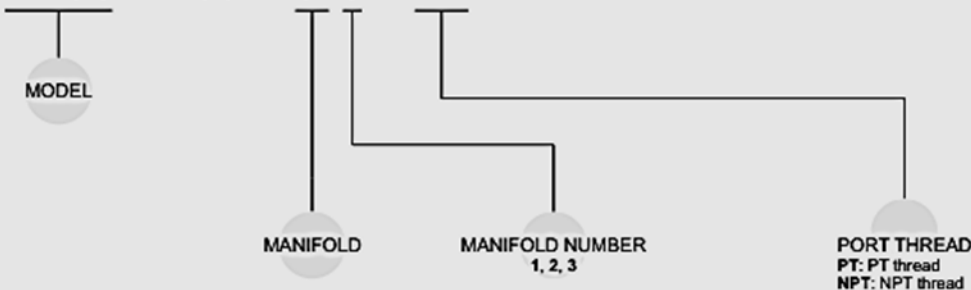
Table 1

Property for explosion-proof type

| | |
|-------------------------|---------------------------------|
| Anti-explosion class | EEx m II T4 |
| Voltage | AC110V, 220V, (50/60)Hz, DC24V. |
| Power consumption | AC=4.4VA DC=5W |
| Available voltage range | ±10% |
| Insulation class | F class |

Order example of manifold:

MVSC - 460 - 5B3 - PT



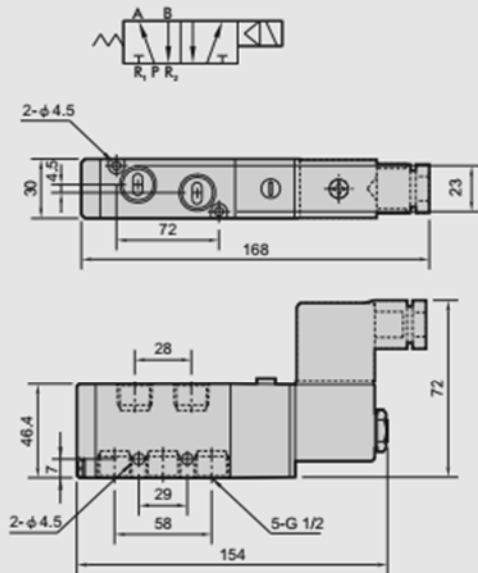
MVSC-460

SOLENOID VALVE

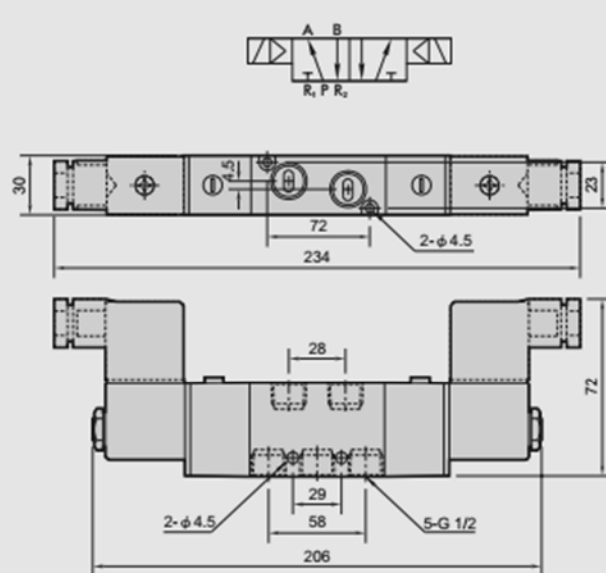


Dimensions:

MVSC-460-4E1

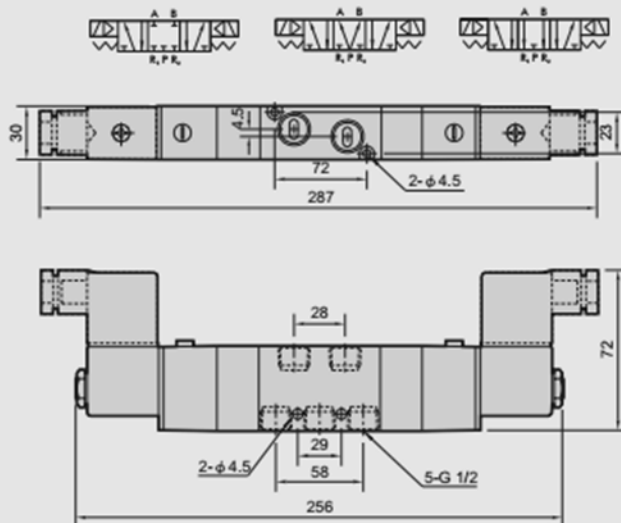


MVSC-460-4E2

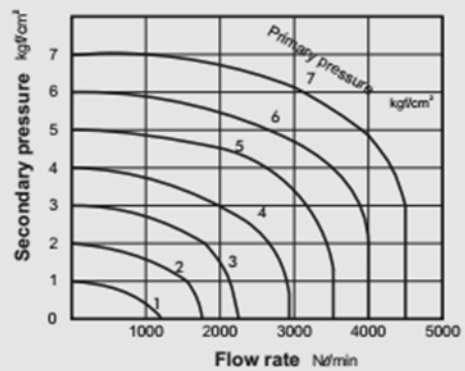


MVSC-460-4E2C.PR

MVSC-460-4E2C MVSC-460-4E2P MVSC-460-4E2R



Flow features:



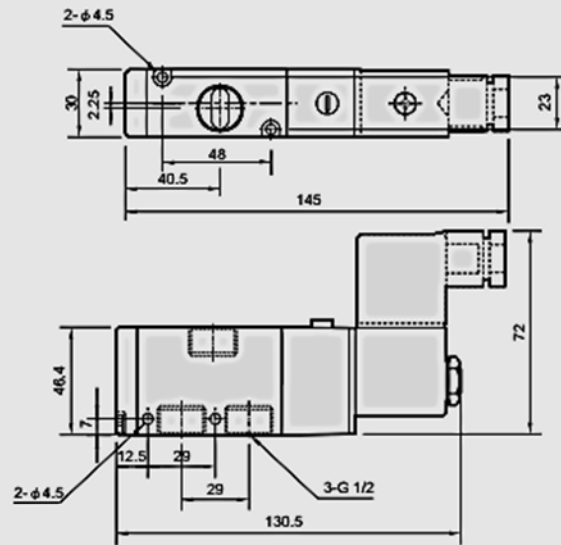
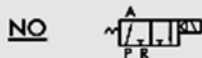
MVSC-460

SOLENOID VALVE



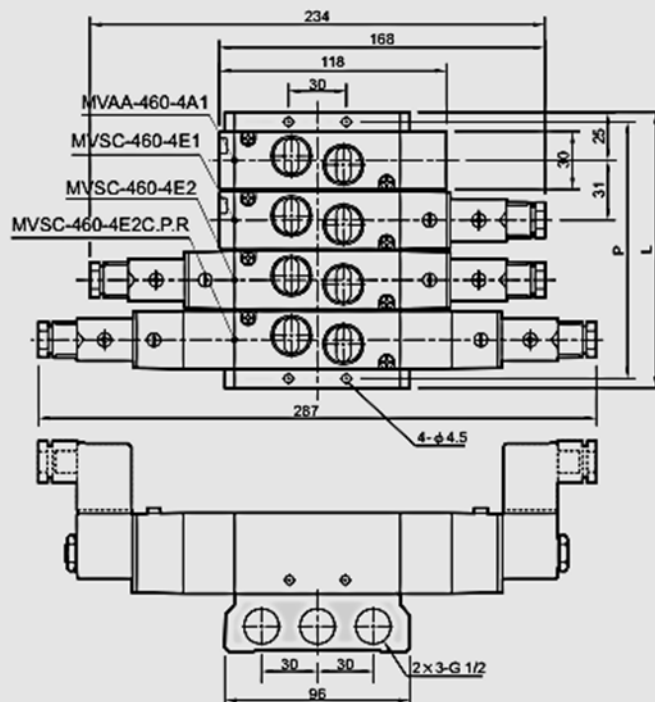
Dimensions:

MVSC-460-3E1-NC/NO



Manifold of solenoid valve:

MVSC-460-5B*



| No. of stations | P | L |
|-----------------|-----|-----|
| 2 | 71 | 81 |
| 3 | 102 | 112 |
| 4 | 133 | 143 |
| 5 | 164 | 174 |
| 6 | 195 | 205 |
| 7 | 226 | 236 |
| 8 | 257 | 267 |
| 9 | 288 | 298 |
| 10 | 319 | 329 |