

MSC200/300 series

FLOW CONTROL VALVE



OTHER



Specification:

Model	MSC200		MSC300	
	6A	8A	10A	15A
Bore No.	6A	8A	10A	15A
Port size	PT 1/8	PT 1/4	PT 3/8	PT 1/2
Medium	Air			
Operating pressure range	0-9.9 kgf/cm ² (0-0.99 MPa)			
Proof pressure	15 kgf/cm ² (1.5 MPa)			
Ambient temperature	-5~ +60°C (No freezing)			
Flow(l/min)	800		1650	
Weight	72 g		130 g	

Order example:

MSC200 - 6A - BSP

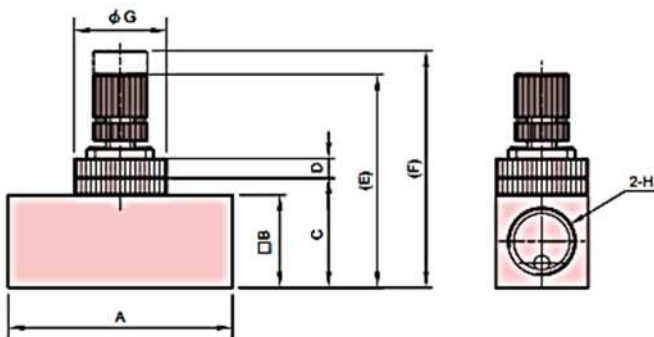
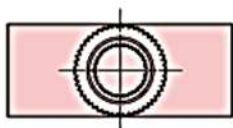
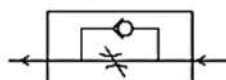
MODEL

BORE SIZE

PORT THREAD

Blank: PT thread
BSP: BSP thread
NPT: NPT thread

Symbol:



Code Model	A	B	C	D	E	F	G	H
MSC200	6A	46	19	22.5	4	43.8	48.6	11 PT 1/8
	8A	46	19	22.5	4	43.8	48.6	11 PT 1/4
MSC300	10A	56	25.4	30	4	53.7	62.5	13 PT 3/8
	15A	56	25.4	30	4	53.7	62.5	13 PT 1/2

Flow feature :

