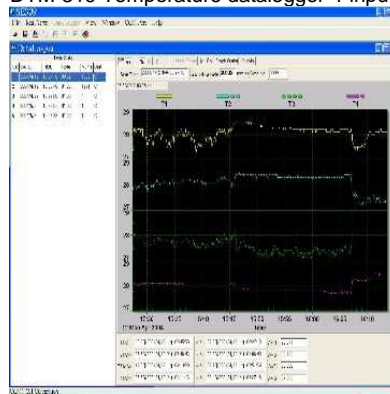


# DTM-319 4-input Temperature datalogger

Product ID: DTM-319



DTM-319 Temperature datalogger 4-input



Software

## 4 - Input Digital Thermometer

Model : DTM-319

DTM-319 Temperature datalogger 4-input: -200°C ~ 1,370°C (-328°F ~ 2,498°F )

Data Logging capacity 16,000 records for each channel.

4 Digit LCD display for every tested point.

Recording interval set up.

Reading hold °C or °F annunciators.

4-channel thermocouples can be used simultaneously and recorded.

MAX, MIN. Function.

Auto Power off.

Hold functions.

Automatic low battery indication.

High resolution 0.1°C, 0.1°F

RS-232 Computer interface.

Software program for Windows.

Standard Tripod mount connector

Certificate: CE

## Specifications:

- Specification of DTM-319.
- Specifications :
- Measurement Range : -200°C ~ 1,370°C (-328°F ~ 2,4 98°F )
- Accuracy :
- -200 to 200 °C: ±(0.2% reading +1°C)
- 200 °C to 400°C : ±(0.5% reading +1°C)
- 400 °C to 1370°C: ±(0.2% reading +1°C)
- -328°F to 200°F ±(0.5% reading +1°F)
- -200 °F to 200 °F ±(0.2% reading +1°F)
- 200 °F to 2498 °F ±(0.3% reading +1°F)
- Temperature scale: °C or °F user-selectable
- Resolution : 0.1°C or 0.1°F (200 °C~1370°C, 1°C )
- Sensor : K type Thermocouple probe
- Sampling rate: 3 seconds per testing circle
- Input Protection : 60V DC or 24V rms AC Maximum
- General Specifications:
- Power Requirement: 1 piece 9V battery
- Dimensions: 7.2" x 2.5"x 1.2" (184 x 64x 30mm)
- Weight : 7.4 oz(210g)
- Accessories: RS-232 cable and software for WINDOWS), Deluxe carrying case, owners manual, TPK-01 bead probe x 2 pcs
- Option Accessory: AC adaptor( DC 9V), Special Type K thermocouples
- Certificate: CE
- Ordering Information:
- DTM-319 Thermometer
- Q and A
- Sample rate- Can you please clarify the sampling rate and the update rate of the meter. I understand that the recording interval is from 1 sec
- to 1 hour and the sampling rate is 3 secs. Does that mean I will get 3
- similar readings if the update rate is set to 1 second?
- Answer: The response time of DTM-319 is 1 ~ 3 seconds and therefore, you might get similar test result in 3 seconds.
- Datalogging capability (16000 records)- Is this figure quoted for all 4 channels or per channel?
  - Answer: One channel is 16000 points seperately.
  - 3)If datalogget is done via software using a PC, is there a restriction
  - on the number of data points I can log?
  - Answer: The maximum is 99999 points
- Does the software comes with any labVIEW drivers?
  - Answer: No, There is no driver for LabView available.
- What is battery life if instrument is all the time active?
  - Ans: Approximately 100 hours with alkaline battery.
  - Therefore, if using time is over this period, it is suggested to use AC adapter.
- When the memory of instrument is full, instrument stoped or override already stored readings.
  - When the memorry of instruments is full, it will stop recording immediately.
  - The stored readings will be kept in the meter unless you reset or erase the meter.
- **Certificate:**
- CE